

# Building Foundations That Last

## Kindergarten Informative Model Planning Form

Date: April

Quarterly Benchmark: 4th

**T**opic: Fish Facts

**A**udience: Kindergarten Scientists

### Curriculum Connection: Science – Animals 2x2 (Fish)

**Experiences** – Observations of classroom goldfish and guppies

**Science Kit Texts** – Animals 2x2 (pgs. 4-7 Goldfish and Guppies), Animals (pg.5)

**Discovery Ed. Video** – Beginning Classification: Fish or Amphibians, Fish & Reptiles: Fish

**Literature Supports** – About Fish: A Guide for Children (Sill), DK Eyewitness Books: Fish (Parker), A Fish Out of Water (Palmer), Swimmy & Fish is Fish (Lionni),

#### Process

- Plan depicts a sketch of 2 facts learned
- Uses information from a variety of sources

#### Surface Features

- Has 2 sentences (matched to facts learned)
- Spells words with close approx.
- Uses environmental print

#### Content

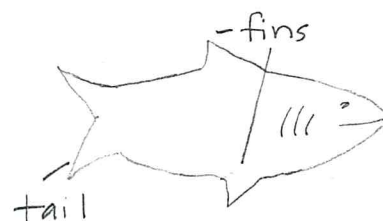
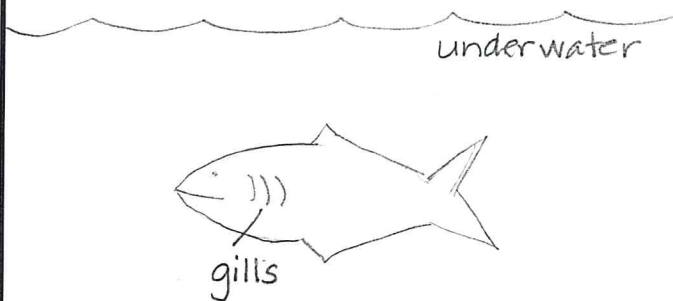
- Contains informational labels in the plan
- Information accurately reflects the topic
- Writes 2 facts learned

### Introduction (Orally share)

The body structure of a fish allows it to live in an underwater environment.

#### Body

Fish Facts



### Conclusion (Orally share)

Fish can be many different sizes, shapes and colors but need their unique body parts to survive in the water.

**The Writing (2 Sentences)**

Fish live underwater and use their gills to breathe air.

A fish uses his/her tail and fins to swim smoothly through his/her habitat.